

SuperKlean Washdown Products

May 2014

DURAREEL DR8 & DR8S INSTALLATION AND MAINTENANCE INSTRUCTIONS

****DO NOT THROW AWAY AFTER INSTALLATION****

****SAVE AND DISPLAY PROMINENTLY WHERE THIS EQUIPMENT IS USED****

GENERAL WARNINGS

High pressure and hot liquid sprays can cause serious bodily injury.

Read all safety instructions carefully before attempting to install, operate, or maintain this product. Only qualified personnel should undertake the installation and commissioning of this product. Failure to comply with instructions could result in personal injury and/or property damage.

Failure to follow recommended application information and recommended procedures for selection, installation, care, maintenance and storage of reel assembly, swivel, hose, couplings or hose assemblies may result in failure to perform properly and may result in damage to property and serious bodily injury.

Follow good maintenance practices – Establish a program of inspection, testing and replacement of reel components from factors including severity of application, frequency of equipment use, and past performance of reel components.

Only properly trained persons should inspect, test, or service reel and hose assemblies. Periodic updating of training is recommended.

PRESSURE WARNINGS

This equipment should be properly installed before use in accordance with local codes and ordinances.

The pressure from the hose reel should be disconnected from the hose reel before any service functions are performed.

This hose reel must not be used for pressure greater than 300 PSI.

OPERATIONAL WARNINGS

Exercise care when handling the hose reel during normal operation. These hose reels have a rotating drum powered by a spring under tension.

SuperKlean Washdown Products

Do not use hose different from that for which the reel is intended. Changes in diameter, weight per foot, length of hose or flexibility (Minimum Bend Radius) will affect the operation of the reel.

Mounting hardware and fasteners should be installed to maintain tightness under vibration and checked periodically to ensure tightness.

Overhead installation mountings should be such that the reel is not supported by bolts in tension. A safety chain, cable, enclosure or netting is strongly recommended to minimize damage and/or possible injury in the event of a mounting failure.

MAINTENANCE WARNINGS

Modification of the equipment may cause excessive wear and will void the warranty. Contact SuperKlean regarding changes or modifications of equipment which could affect reliability or safety.

DO NOT DISASSEMBLE THE SPRING MOTOR FOR ANY REASON! Serious personal injury could result. These hose reels are equipped with a spring under tension. Contact SuperKlean for assistance.

PERSONAL SAFETY

Ensure reel has been properly installed before connecting supply line.

Before connecting to reel, be certain supply line does not exceed rated pressure of the hose reel.

Thoroughly review the "Hose Installation" instructions to properly install hose.

Perform "Operational Check" per instructions to ensure reel is operating properly.

If a leak should occur after applying pressure to the reel, immediately discontinue supply line pressure.

STAY SAFE!

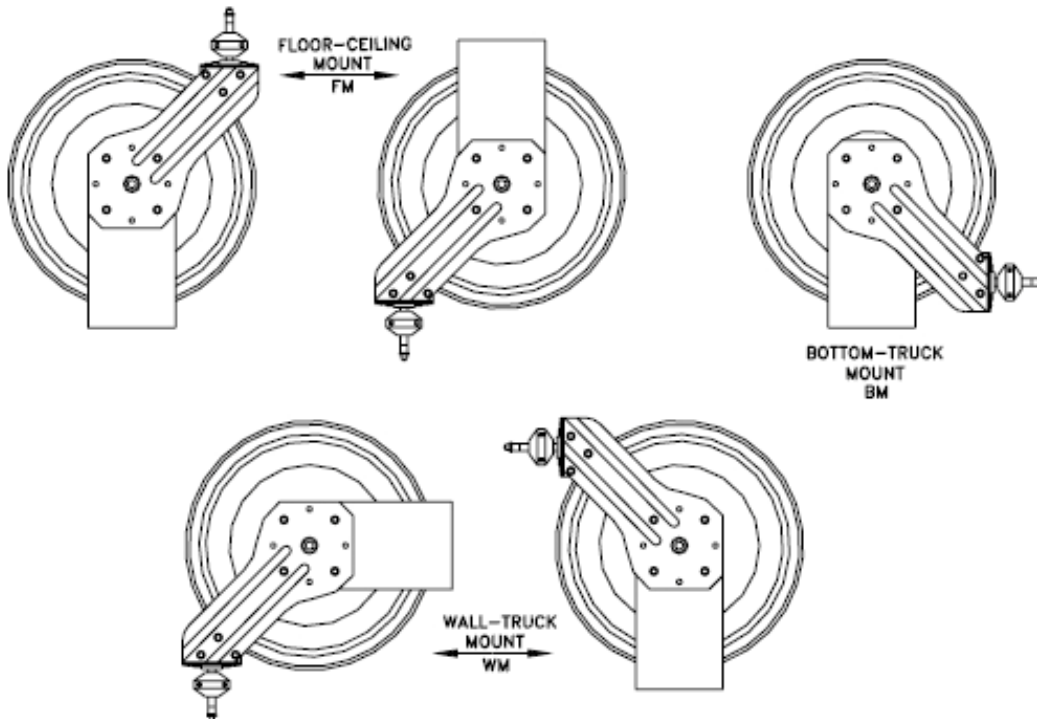
SuperKlean Washdown Products

INSTALLATION:

WARNING: READ THESE INSTRUCTIONS CAREFULLY BEFORE ATTEMPTING TO INSTALL, OPERATE, OR MAINTAIN THIS PRODUCT. ONLY QUALIFIED PERSONNEL SHOULD UNDERTAKE THE INSTALLATION AND COMMISSIONING OF THIS PRODUCT. FAILURE TO COMPLY WITH INSTRUCTIONS COULD RESULT IN PERSONAL INJURY AND/OR PROPERTY DAMAGE. REEL SHOULD NOT BE INSTALLED ABOVE 15 FEET MAXIMUM FROM THE FLOOR.

MOUNTING OF REEL:

1. Reel is supplied with guide arm in standard positions.
2. Guide arm may be adjusted to desired location as shown in the following figure:



3. Pull out hose until reel latches.
4. Remove four bolts holding guide arm to support base.
5. Reposition guide arm and securely fasten four bolts.
6. Reposition inside hose clamp to alternate position as needed.
7. To mount reel to a solid structure use four 7/16" or M12 bolts, washers, and nuts. Four masonry bolts may be used depending on mounting application. Mounting hardware is NOT provided. The mounting base of the reel has two 1/2" slots and two 1/2" holes.
8. Loosely fit two pieces of mounting hardware to ceiling, floor, or wall so that reel can be slid into position. Fit reel. Install two pieces of hardware in other end of reel. Securely fasten all bolts and nuts.

SuperKlean Washdown Products

9. Overhead installation mountings should be such that the reel is not supported by bolts in tension. A safety chain, cable, enclosure or netting is strongly recommended to minimize damage and/or possible injury in the event of a mounting failure.

INSTALLATION OF INLET HOSE:

1. Apply thread sealant to inlet hose and connect to the swivel joint on reel. **CAUTION: IT IS IMPORTANT TO USE A "FLEXIBLE" INLET HOSE. DO NOT USE SOLID PIPING OR RESTRAIN INLET HOSE AS TO CAUSE ANY SIDE FORCE ON SWIVEL JOINT. THE WARRANTY IS VOID IF NOT PROPERLY INSTALLED.**
2. Flush some product through the system before connecting inlet hose to the source. If reel includes hose, flush some product through system including the included hose before connecting end fitting, nozzle, or tool.
3. (Reel supplied less hose) Apply thread sealant to outlet hose fitting. Connect end, nozzle, or tool as desired.
4. If a hose stopper adjustment is required to allow easy reach of end fitting or tool; latch reel at approximate desired location, loosen (two) ball stop bolts. Move ball stop and tighten bolts. Unlatch reel.
5. Connect Inlet hose to supply source.

INSTALLATION OF OUTLET HOSE:

NOTE: Before proceeding, ensure that you are installing the proper size, length and type of hose per the reel rating. Consult hose manufacturer if unsure of rating. Damage may occur if wrong hose is installed.

1. Securely stabilize the reel.
2. Wind the reel drum clockwise (facing the swivel) until the spring is tight. **Use Extreme Caution!**
3. Back off approximately two turns and lock the reel drum to keep from rotating.
4. Insert the MALE fitted end of the hose through the roller guide arm and through the cutout in the side of the drum flange.
5. The MALE hose fitting should now be on the outside of the drum. Apply thread sealant, connect hose fitting to the swivel joint and secure the hose rigid with the (two) hose clamps. **NOTE:** The hose clamps restrain the hose when fully extended, preventing strain between the fittings and swivel joint.
6. **CAREFULLY** release the locking ratchet and **SLOWLY** allow the hose to retract onto the reel.

SPRING TENSION ADJUSTMENT:

1. Release line pressure prior to making spring adjustments.
2. Disconnect inlet hose.
3. Pull out approximately 6 feet (2m) of hose and latch the drum.

SuperKlean Washdown Products

4. Add or subtract one wrap of hose as desired to acquire the proper tension on the reel.
NOTE: Spring tension adjustment is accomplished by adding wraps of hose around the drum (to increase tension) or subtracting wraps of hose (to decrease tension).
CAUTION: Improper tensioning of spring or adding too many pre-wraps may cause damage to spring mechanism. Only authorized personnel should make adjustments.
5. Unlatch drum and check for proper tension.
6. Connect Inlet hose.

SWIVEL SEAL REPLACEMENT:

1. Remove inlet hose from swivel.
2. Remove swivel from reel by unscrewing swivel from the axle shaft. Disconnect hose from swivel.
3. Remove retaining ring on swivel; pull out shaft from body.
4. Replace the seals, lubricate and reassemble swivel.
5. Fit hose to swivel then fit swivel to reel. **Do not over-tighten.**
6. Reconnect inlet hose and test for leakage.

SPRING CANISTER REPLACEMENT:

1. Pull out approximately 3 feet (1m) of hose and latch the reel.
2. Remove outlet nozzle, gun or tool and hose stopper.
3. Carefully unlatch the reel and **firmly hold the drum**. Allow the drum to **slowly** unwind until it stops.
4. Remove the retaining ring, spacer and swivel unit.
5. Remove the two or four nuts located on the support post side inside the drum cavity. **Do not** attempt to remove the spring canister nuts.
6. Pull spring canister off drum and axle shaft.
7. Reverse above procedure to re-assemble.
8. Re-tension the reel by turning the drum three complete turns clockwise (from swivel side) and latch the drum.
9. Feed the hose through the hose guide. Fit hose stopper, then unlatch the drum. Hose stopper should sit snugly against the hose guide.

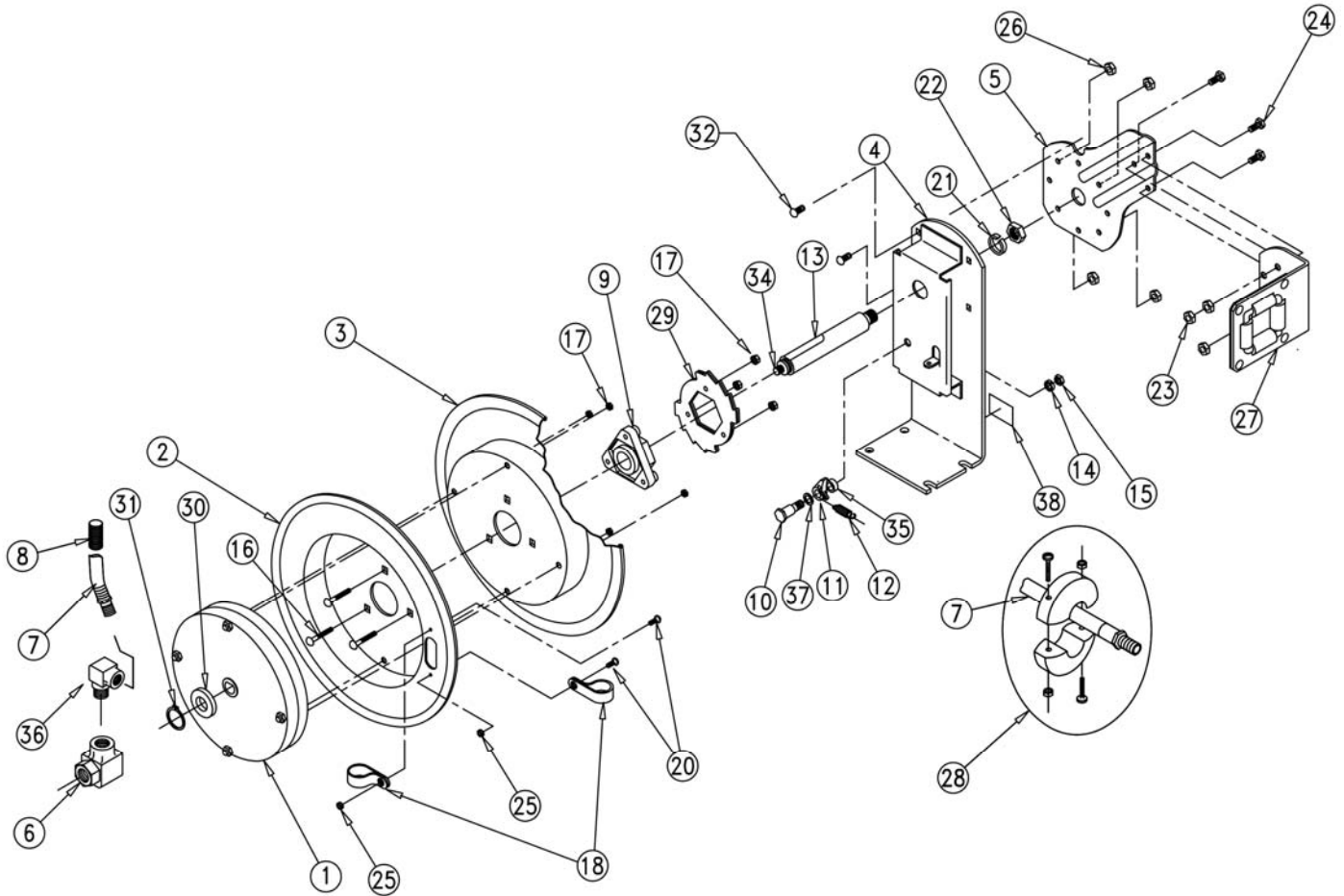
SuperKlean Washdown Products

TROUBLESHOOTING:

Symptom:	Possible Causes:	Remedy:
Hose will not fully retract.	<ol style="list-style-type: none">1. Outlet nozzle, gun or tool is too heavy.2. Spring is fatigued.3. Field installed hose is too long.	<ol style="list-style-type: none">1. Add spring tension. See "Spring tension adjustment".2. Add spring tension. See "Spring tension adjustment".3. Correct specified hose length.
Hose will not retract at all.	Spring has lost all tension or has possibly broken.	<ol style="list-style-type: none">1. Reinstall spring tension.2. Replace spring canister. See "Spring canister replacement".
Reel will not latch.	<ol style="list-style-type: none">1. Incorrect operation.2. Dog spring or locking cam is broken or worn.	<ol style="list-style-type: none">1. Reel latches on first, second, third or fourth "click". After fourth "click" it automatically rewinds.2. Replace dog spring (Part #: DR11) or locking cam (Part #: DR12).
Fluid leaks from swivel.	Swivel seals are damaged or worn.	Replace swivel seals. See "Swivel seal replacement". Caution: Be sure leak is not at hose fitting!
Hose locks up when fully extended.	Hose clamp is in the incorrect position.	Relocate hose clamp to optional location

SuperKlean Washdown Products

PARTS LIST



Part No.:	Description:	Part No.:	Description:	Part No.:	Description:
DR-1	Spring	DR-14	Lock Washer, 3/8"	DR-28	Ball Stop
DR-2	Drum	DR-15	Jam Nut, 3/8-16	DR-29	Locking Ring
DR-3	Drum	DR-16	Carriage Bolt, 1/4-20 x 1 1/2"	DR-30	Spacer Washer
DR-4	Base	DR-17	Keps Nut, 1/4-20	DR-31	Retaining Ring (5160-75)
DR-5	Arm Guard	DR-18	Clamp (2 pieces)	DR-32	Carriage Bolt, 5/16-18 x 3/4"
DR-6	Swivel	DR-20	Bolt, 10-32 x 3/8	DR-34	Setscrew, 3/8-16 x 1" Stainless Steel
DR-7	Hose	DR-21	Lock Washer, 5/8"	DR-35	Spacer Washer
DR-8	Hose Guard	DR-22	Hex Nut, 5/8-11	DR-36	Elbow
DR-9	Hub Bearing Assembly	DR-23	Lock Nut, 5/16-18	DR-37	Spacer Washer
DR-10	Shoulder Bolt, 1/2" x 1 1/2"	DR-24	Bolt, 5/16-18	DR-38	Label
DR-11	Cam Lock	DR-25	Keps Nut, 10-32		
DR-12	Dog Spring	DR-26	Lock Nut, 5/16-18 Low Profile		
DR-13	Axle	DR-27	Roller Bracket		